

TRITON



TRITON SELECT RANGE



Every drop makes a difference

At Triton, we make showers. That's nothing world-changing, but we're trying to do our bit. An electric shower will help save water, save energy and save you money. Meaning households in the UK can enjoy every wash with a cleaner conscience.

We're proud to be known as 'The Great Irish Shower company' having produced expertly engineered, innovative shower designs since 1975. We have been at the forefront of providing customers with energy-efficient showering for over 45 years.

Our showers are expertly designed and rigorously tested. That way, we've done absolutely everything we can to provide a reliable, enjoyable product that works perfectly every time.

With rising living costs and increasing demand for natural resources, every drop really does make a difference when selecting energy-efficient water heating appliances for the home.



Reasons to choose Triton



Full Parts and Labour Guaranteed

Full parts & labour guarantee on every shower we make.



Fit and Forget

Buy it, fit it and forget it – because our superb service team is always on tap.



Easy to Install

Our showers are designed with quick, hassle-free fitting in mind.



Trusted Triton Service

Trust our national team of shower experts to keep your shower running day or night.



For a Cleaner Conscience

Electric showers are an efficient and more sustainable way to heat and use water.

Connect with us at tritonshowers.ie



Contents

Every Drop Makes A Difference	2 – 3
Thermostatic Electric Shower	4 – 5
Pumped Electric Showers	6 – 9
Electric Showers	10 – 11
Thermostatic Power Showers	12 – 13
Mixer Showers	14 – 21
Shower Riser Rail Kit	22 – 23



Black Trim



Silver Trim



Tri-Hub Electric Shower Unit
Not available to purchase as a single unit

Single Outlet Ceiling Fed Kit

Product	Power	Code
Silver Trim	9.0kW	GEENVC92
Silver Trim	10.5kW	GEENVC12

Single Outlet Ceiling Fixed Head

Product	Power	Code
Silver Trim	9.0kW	GEENVF92
Silver Trim	10.5kW	GEENVF12
Black Trim	9.0kW	GEENVF93
Black Trim	10.5kW	GEENVF13

Single Outlet Wall Fed Kit

Product	Power	Code
Silver Trim	9.0kW	GEENVE92
Silver Trim	10.5kW	GEENVE12
Black Trim	9.0kW	GEENVE93
Black Trim	10.5kW	GEENVE13

DuElec® Dual Outlet Kit

Product	Power	Code
Silver Trim	9.0kW	GEENVD92
Silver Trim	10.5kW	GEENVD12
Black Trim	9.0kW	GEENVD93
Black Trim	10.5kW	GEENVD13

4 Kit Options

Thermostatic Electric Shower Single Outlet Ceiling Fed Kit



Colours Available



Effortless installation - Ceiling fed kit with 5 spray pattern shower head

Thermostatic Electric Shower Single Outlet Ceiling Fixed Head



Colours Available



Luxurious rainfall - 220mm fixed shower head with adjustable ceiling arm (135mm-216mm)

Thermostatic Electric Shower Single Outlet Wall Fed Kit



Colours Available



Minimalist design - Concealed wall fed kit with 5 spray pattern shower head

Thermostatic Electric Shower DuElec® Dual Outlet Kit



Colours Available



DuElec® - Seamlessly divert between a luxurious rainfall and 5 spray pattern shower head



INFO

- All new experience - Intuitive control with full colour digital display
- Get the look - Select from x2 premium finishes to match your bathroom style
- DuElec® - Seamlessly divert between a luxurious rainfall and 5 spray pattern shower head
- Personalisation - Create x6 individual time and temperature profiles
- Eco conscious - Shower a minute less and save water, save energy and save money
- User feedback - Water, Energy and Cost data on personal shower use
- Enhanced control - Tri-Protect® precise thermostatic temperature operation
- Phased shutdown - reducing unwanted scale build up
- Flexible installation - Tri-Hub can be located in the loft or airing cupboard
- Replacement installation - discover the ENVI® retrofit plate accessory to cover marks from the previous electric shower installation. Visit tritonshowers.co.uk/envi for more information

INSTALLATION PRODUCT DATA

Temperature Control	Thermostatic (Tri-Protect®)
Power Ratings	9.0kW & 10.5kW (240V)
Inlet Connection	1/2" BSP push-fit/compression
Water Entry Points	Bottom
Cable Entry Points	Left Hand Side
Outlet Connection	15mm push-fit/compression
Plumbing System Compatibility	Cold mains only
Minimum Running Pressure	0.7 Bar
Maximum Static Pressure	10 Bar
Installation Location	Loft or airing cupboard
Approvals, Complies with	BEAB, CE, UKCA, BSI Kitemark
Guarantee	2 years

*Recommended minimum running pressure/flow for full performance 1 bar @8l/min

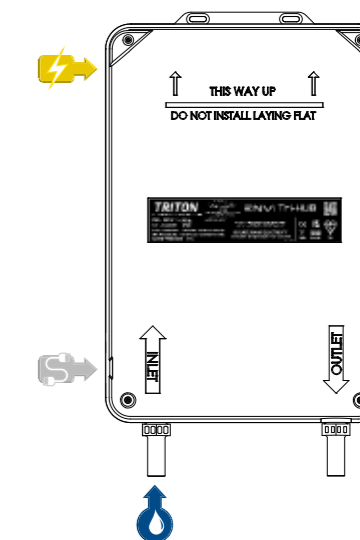
DIMENSIONS

Diagram Key:

- Cold Water Connection Point
- Electric Cable Entry Point
- Controller Cable Entry Point

Dimensions:

H: 400mm
W: 240mm
D: 95mm



T90SR

Pumped Electric Shower

The Quiet Mark awarded T90SR pumped electric shower is ideal for great showering performance on low pressure water systems



CODES		
Product	Power	Code
White/Chrome	9kW	XT95RI953
Satin/Chrome	9kW	XT95RISAT9



Satin Finish



INFO

The T90SR, the first silent pumped electric shower - so quiet that you'll only hear the water!

The brushless motor technology means no motor noise and eliminates the accumulation of carbon dust making the T90SR more durable and longer lasting. By allowing the water to flow more freely inside the shower, coupled with the higher 9kW power rating, the T90SR delivers flow rates resulting in a revolutionary shower experience.

Replacing the previous T90 model is a breeze as the new T90SR and shower rail has the same footprint and fixing points. The water and cable entry points also remain the same for ease of installation.

- Manual Temperature Control - ergonomic settings for ease of use
- Integrated Pump - shower has a built in pump, ideal for homes where water pressure is low, unreliable or non existent
- Push Button Start/Stop - retains your preferred power and temperature settings
- Dial Power Setting - cold-eco-high dial to select your seasonal power settings
- LED 'Power On' Indicator
- 5 Spray Pattern Easy Clean Dura-flow™ Shower head a removable 'push and twist' spray plate to clean those hard to reach places

INSTALLATION PRODUCT DATA

Temperature Control	Pumped Electric Stabilised
Power Ratings	9kW (230V)
Inlet Connection	1/2" BSP compression
Water Entry Points	Top, bottom, back (left hand side of unit)
Cable Entry Points	Top, bottom, back (left hand side of unit)
Outlet Connection	1/2" BSP
Plumbing System Compatibility	Cold water cistern only (Gravity fed system)
Minimum Head Height	80mm
Maximum Head Height	10m
Approvals, Complies with	BEAB, KIWA, CE, BSI Kitemark, IP25, Quiet Mark
Guarantee	2 years

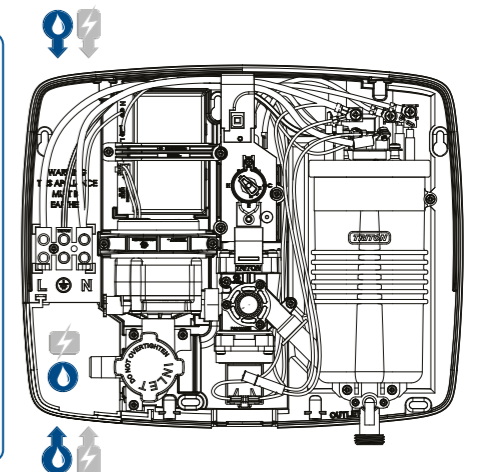
DIMENSIONS

Diagram Key:

- Water Entry Points
- Cable Entry Points

Dimensions:

- H: 266mm
- W: 322mm
- D: 95mm



T90SR DuElec®

Pumped Electric Shower – Dual Outlet Kit

The Quiet Mark awarded T90SR DuElec® unique showering experience switches seamlessly between a handheld and fixed rainfall shower head

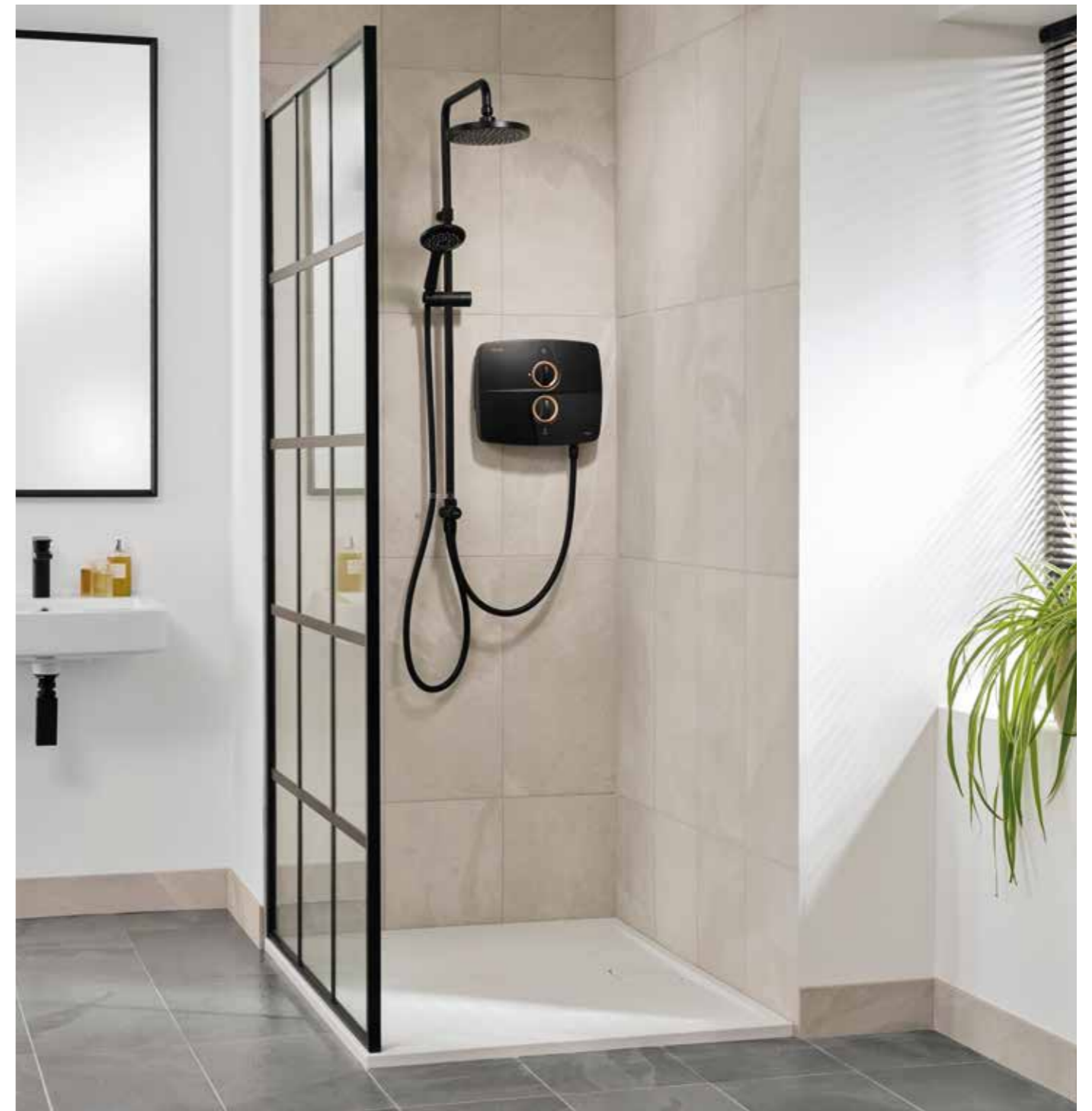


CODES

Product	Power	Code
White	9kW	XE90DU91
Matte Black & Copper	9kW	XE90DU93

INFO

- Seamlessly divert between the large fixed shower head and the 5 spray pattern hand set or alternatively run them both at the same time
- Quiet Mark awarded integrated pump significantly reduces noise traditionally expected from pumped electric showers
- The digital brushless motor effortlessly boosts the water pressure of gravity fed systems
- 9.0kW rating and free flowing components allow higher flow rates
- Easy prime pump allows water flow without the need to operate the pump
- Multiple entry points for pipe and cable, and ideal shape for replacing previous T90 models
- Now an even better alternative to a mixer shower on a gravity system, able to operate at lower head gravity and typically offering better flow rates and an improved showering experience



Matte Black & Copper Finish

INSTALLATION PRODUCT DATA

Temperature Control	Pumped Electric Stabilised
Power Ratings	9kW (230V)
Inlet Connection	1/2" BSP compression
Water Entry Points	Top, bottom, back (left hand side of unit)
Cable Entry Points	Top, bottom, back (left hand side of unit)
Outlet Connection	1/2" BSP
Plumbing System Compatibility	Cold water cistern only (Gravity fed system)
Minimum Head Height	80mm
Maximum Head Height	10m
Approvals, Complies with	BEAB, KIWA, CE, BSI Kitemark, IP25, Quiet Mark
Guarantee	2 years

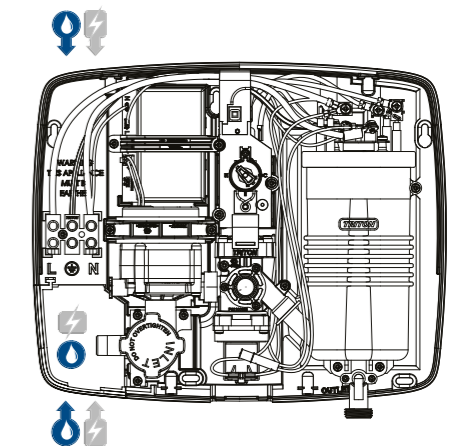
DIMENSIONS

Diagram Key:

- Water Entry Points
- Cable Entry Points

Dimensions:

- H: 266mm
- W: 322mm
- D: 95mm



Amore DuElec®

Electric Shower - Dual Outlet Kit

Sleek, elegant and ultra-easy to use, enhancing your showering experience by allowing you to divert between a handheld and fixed rainfall shower head



AMORE DuElec® CODES

Product	Power	Code
Gloss Black	9.5kW	GEAMDU93
Gloss White	9.5kW	GEAMDU91



DuElec® Kit
Also sold separately

DuElec® KIT CODES

Product	Code
DuElec® Kit (Black)	XADUKIT3
DuElec® Kit (Chrome)	XADUKIT2



INFO

- Select from two finishes - Gloss Black or Gloss White
- Choice of showering experience - divert water between a 5 spray pattern shower head and luxurious fixed rainfall shower head, or even use both together
- Crisp white digital display with temperature read out
- Touch activated power selector, on/off button and temperature control dial
- 5 spray shower head with removable spray plate and 1.5m anti-twist hose
- 0.75m anti-twist diverter connector hose
- Suitable for cold mains only
- 2 year parts and labour guarantee
- Efficient A energy rating



Gloss White Finish

INSTALLATION PRODUCT DATA

Temperature Control	Stabilised
Power Ratings	9.5kW (240V)
Inlet Connection	1/2" BSP male compression
Water Entry Points	Top, bottom, side bottom, back (left hand side unit) Bottom, side bottom, back (right hand side unit)
Cable Entry Points	Top, bottom, side bottom, back (left hand side unit)
Outlet Connection	1/2" BSP
Plumbing System Compatibility	Cold mains only
Minimum Running Pressure/Flow	1 Bar @ 8 l/min
Maximum Static Pressure	10 Bar
Approvals, Complies with	BEAB, KIWA, CE, UKCA, BSI Kitemark, IPX4
Guarantee	2 years

*Recommended minimum running pressure/flow for full performance 1 bar @8l/min

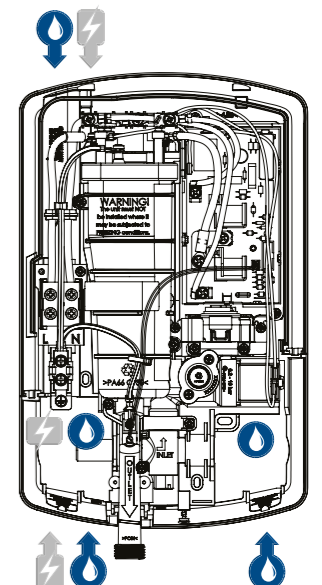
DIMENSIONS

Diagram Key:

- Water Entry Points
- Cable Entry Points

Dimensions:

- H: 300mm
- W: 200mm
- D: 94mm



NovelSR

Thermostatic Power Shower

The outstanding Quiet Mark awarded power shower



CODES	
Product	Code
White	XIPSTHMSRI
Black	XPNOVEL3
Satin	XPNOVEL5



White Finish



Satin Finish



INFO

- Quiet mark awarded pumped motor technology
- Easy-to-use start/stop button
- Thermostatic control constantly regulates the temperature providing you with precise control and a safer showering experience
- Adjustable maximum temperature stop reduces the risk of accidentally turning the temperature too high
- Multiple cable and water entry points including the Triton Swivel-Fit™ water inlet, enabling top, rear or bottom entry providing ease of installation for a perfect fit
- Larger footprint makes it an ideal replacement for existing Triton power shower models
- Large 5 spray pattern easy clean shower head
- 1.25m anti-twist hose

INSTALLATION PRODUCT DATA

Temperature Control	Thermostatic
Voltage 230/240V Ac.	Rating 53W nominal
Inlet Connections	1/2" BSP push fit
Water Entry Points	Rising, falling, back
Outlet Connection	1/2" BSP
Plumbing System Compatibility	Low pressure gravity
Minimum Head Height	75mm
Maximum Head Height	10m
Maximum Open Outlet Flow Rate	14l/min
Approvals, Complies with	BEAB, KIWA, CE, UKCA, BSI Kitemark, Quiet Mark
Guarantee	2 year

*Recommend minimum running pressure/flow for full performance 1 bar @8l/min

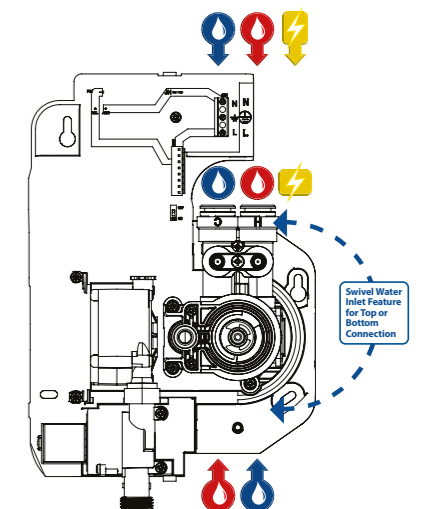
DIMENSIONS

Diagram Key:

- H & C Water Entry Points
- Cable Entry Points

Dimensions:

- H: 292mm
- W: 219mm
- D: 115mm



Eske TMV2

Thermostatic Bar Mixer Shower

Great value lever operated thermostatic bar mixer with its longer riser rail and hose creates an elegant look and feel for any bathroom



CODES

Product	Code
Lever Bar Mixer	XMESKBM2



INFO

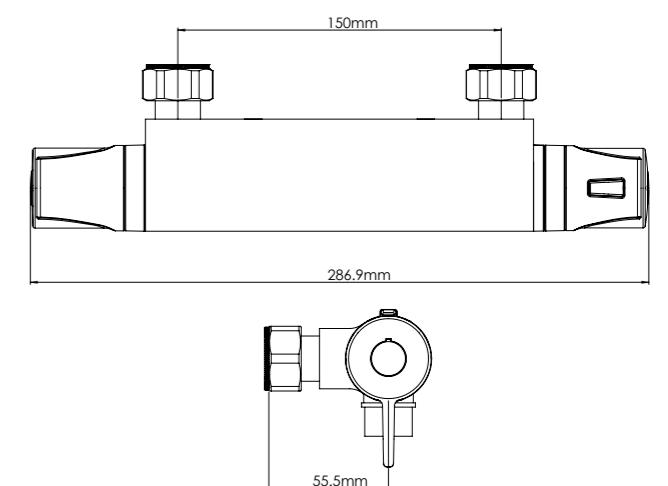
- TMV2 Thermostatic temperature control maintains consistent, comfortable showering temperature
- Durable ceramic disc flow control
- Easy operation lever handle
- Automatic shutdown safety feature should either the hot or cold water supplies fail
- Shower kit - 5 spray pattern shower head with removable face plate, 1.5m anti-twist hose, 670mm riser rail shower kit with adjustable wall fixings
- Suitable for all systems, including gravity fed
- 10 year parts and labour guarantee



INSTALLATION PRODUCT DATA

Temperature Control	Thermostatic
Inlet Connection	1/2" BSP female push fit
Outlet Connection	1/2" BSP bottom
Plumbing System Compatibility	All systems
Minimum Running Pressure	0.1 Bar
Maximum Running Pressure	5 Bar
Maximum Static Pressure	10 Bar
Open Outlet Flow Rate @ 0.1 Bar	3.8 l/min
Approvals, Complies with	BS EN1111, WRAS (valve only), TMV2 (HP-S)
Guarantee	10 years

DIMENSIONS



Dene TMV2 Cool Touch Diverter

Thermostatic Bar Mixer Shower

Effortlessly alternate water flow between the rainfall fixed overhead and handset



CODES

Product	Code
Bar Diverter	XTUNDETHBMDIV

INFO

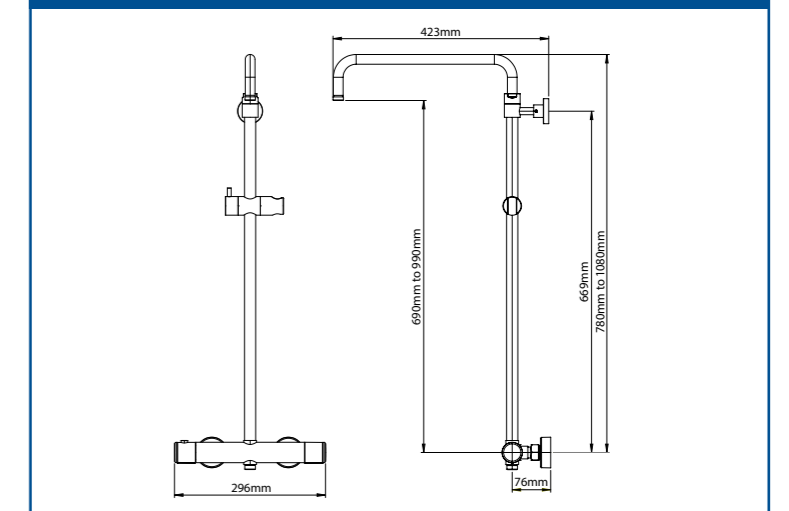
- TMV2 Thermostatic control maintains consistent, comfortable showering temperature
- Cool touch feature - ensures that the valve remains comfortable to touch
- Integral diverter switches water flow between fixed shower head and a 5 spray pattern handset with 1.5m anti-twist hose
- Automatic shutdown safety feature should either the hot or cold water supplies fail
- Suitable for high pressure systems only
- Height adjustable on installation
- 5 year parts and labour guarantee



INSTALLATION PRODUCT DATA

Temperature Control	Thermostatic
Inlet Connection	3/4" flat face union (valve to fixings)
Outlet Connection	1/2" BSP male
Plumbing System Compatibility	High pressure systems, low pressure with pump
Minimum Running Pressure	0.5 Bar
Maximum Running Pressure	5 Bar
Maximum Static Pressure	10 Bar
Open Outlet Flow Rate @ 0.5 Bar	4.8l/min
Approvals, Complies with	WRAS, TMV2 (HP-S)(Valve Only)
Guarantee	5 years

DIMENSIONS



Dene TMV2 Cool Touch

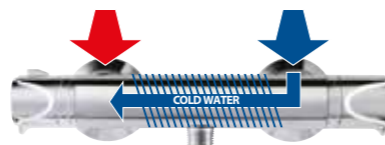
Thermostatic Bar Mixer Shower

Ideal for fast-fit installations



CODES

Product	Code
Black	TMDTBM3
Chrome	UNDETHBMCT
Chrome, Lever	UNDETHBMCTLE
Chrome Eco	ECODETHBM



The cold supply runs across the valve before being mixed



Dene Cool Touch Bar Mixer - Chrome with no lever handle



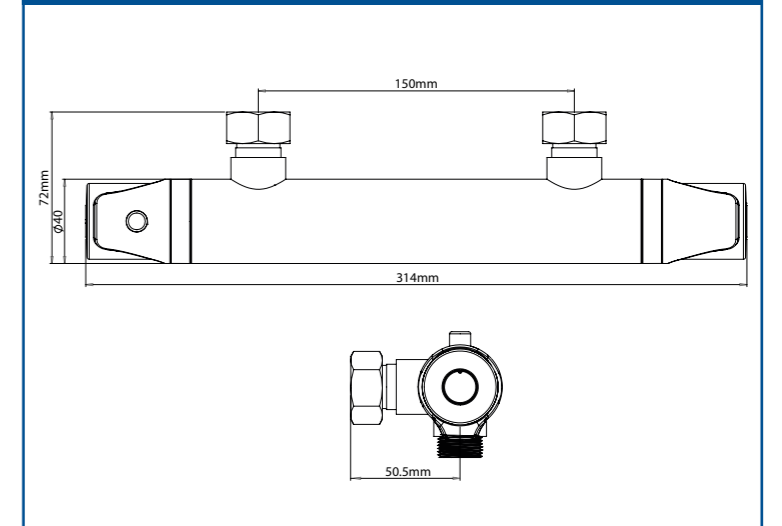
INFO

- TMV2 Thermostatic temperature control maintains consistent, comfortable showering temperature
- Cool touch feature - ensures that the valve remains comfortable to touch
- Durable ceramic disc flow control
- Easy operation lever handle option available with the Dene Lever Bar Mixer
- Water saving option - select the Dene Eco CT bar mixer that will limit flow rate to a maximum of 6 l/min (ECODETHBM)
- Automatic shutdown safety feature should either the hot or cold water supplies fail
- Shower kit with chrome - 3 spray rub clean shower head, 1.25m anti-twist hose, 530mm rail with adjustable brackets'
- Shower kit with black - 5 spray rub clean shower head, 1.5m anti-twist hose, 530mm rail
- Suitable for all systems, including gravity fed
- 5 year parts and labour guarantee

INSTALLATION PRODUCT DATA

Temperature Control	Thermostatic
Inlet Connection	3/4" flat face union (valve to fixings)
Outlet Connection	1/2" BSP bottom
Plumbing System Compatibility	All systems
Minimum Running Pressure	0.5 Bar
Maximum Running Pressure	5 Bar
Maximum Static Pressure	10 Bar
Open Outlet Flow Rate @ 0.5 Bar	7 l/min
Approvals, Complies with	BS EN1111, WRAS (valve only), TMV2 (HP-S)
Guarantee	5 years

DIMENSIONS



Dene TMV2 Mini Concentric

Thermostatic Mixer Shower

Easy to use thermostatic mixer shower featuring accessible forward-facing flow and temperature controls



Dene Concentric Exposed Mixer

CODES

Product	Code
Built-in/ Exposed Mixer	TMDCOBY2



Dene Concentric Built-in Mixer



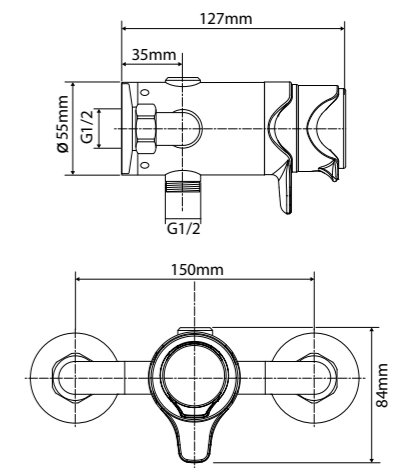
INFO

- Thermostatic temperature control maintains consistent, comfortable showering temperature
- Separate forward facing flow and temperature controls
- Easy operation lever styled controls
- Automatic shutdown safety feature should either the hot or cold water supplies fail
- Shower kit - 3 spray rub clean shower head, 1.25m anti-twist hose, 530mm rail with adjustable brackets
- Suitable for all systems, including gravity fed
- 5 year parts and labour guarantee

INSTALLATION PRODUCT DATA

Temperature Control	Thermostatic
Outlet Connection	1/2" BSP bottom
Plumbing System Compatibility	High and low pressure systems
Minimum Running Pressure	0.1 Bar
Maximum Running Pressure	5 Bar
Maximum Static Pressure	10 Bar
Open Outlet Flow Rate @ 0.1 Bar	3.4l/min
Flow Limiters Fitted	8l/max flow
Approvals, Complies with	WRAS, TMV2 (HP-S)
Guarantee	5 years

DIMENSIONS



Corner Kit

Shower Accessories

New unique space saving shower kit designed to fit into a corner of shower enclosure



Corner Kit
(Chrome)



Corner Kit
(White)

CODES	
Product	Code
Corner Riser Rail (Chrome)	GACORNF2
Corner Riser Rail (White)	GACORNF1
Corner Kit (Chrome)	GACORNC2
Corner Kit (White)	GACORNC1



Corner Riser Rail
(Chrome)



Corner Riser Rail
(White)



INFO

- Designed to suit right hand or left hand installation requirements.
- No more kinks, thanks to a 1.5m chrome anti-twist shower hose
- Circular 5 spray 8000 series shower head, complete with rub clean nozzles and a removable spray plate for easy cleaning
- Also includes a 530mm riser rail, brackets, adjustable shower head holder and soap dish
- Soap dish designed to hold two 500ml bottles



The shower and enclosure roomset is for illustration purposes only



Importer

Earthridge International
Dowdstown
Maynooth
County Kildare

Triton

Triton Road
Nuneaton
Warwickshire
CV11 4NR

Contact:

T (01) 6286711 F (01) 628 6509

Installer Hotline:

+44 (0) 2476 378 320

Customer Service:

T (01) 6286845 or (01) 6286711

Customer Experience:

+44 (0) 2476 372 222

Email:

sales@earthridge.ie

Email:

technical@tritonshowers.co.uk

Website:

www.tritonshowers.ie

Website:

tritonshowers.co.uk



Triton Showers is a division of
Norcross Group (Holdings) Limited.

Triton, Triton Road, Nuneaton,
Warwickshire CV11 4NR

This brochure is printed using Revive 100 uncoated paper which is made from FSC recycled certified post-consumer waste pulp. It is manufactured in accordance with ISO certified standards and is carbon balanced in association with the World Land Trust. Our printer is FSC and ISO 14001 certified and is committed to global carbon reduction.

All dimension illustrations that are featured in this brochure are approximate.

It is our policy to improve the design and specification of our products and we reserve the right to depart from the design given without prior notice. All information in this brochure may be subject to change after the date of printing. E&OE